

BLACK LANE CP SCHOOL

...Aiming high, achieving your best!

NEWSLETTER

MARCH 2026



Cardiff Residential – Years 5&6

Our Year 5 and 6 pupils recently enjoyed a fantastic residential trip to Cardiff. During their visit, they explored Big Pit, toured the Principality Stadium, went ten-pin bowling, took a walk around the Senedd, enjoyed a boat ride, and experienced many other exciting activities.

We are delighted to share that the children represented the school brilliantly throughout the entire trip. Their behaviour was excellent, and they set a wonderful example for Black Lane in every place they visited.

Well done, Year 5/6!



Girls Football Festival

Our school proudly hosted its very first Girls' Football Festival, welcoming five other local schools to join us for a day of sport and fun. The sun was shining, the atmosphere was fantastic and a brilliant time was had by all!

It was wonderful to see so many pupils taking part, showing great teamwork, enthusiasm, and sportsmanship throughout the event. A huge thank you to Miss Ankers for organising a great day and to Katie Barker, Jodie Bartle and Sarah Harvey from Wrexham AFC Women's team for coming up to support the girls.



Come and See/Stay and Play Sessions

This month, we held our Come and See and Stay and Play sessions, welcoming parents and carers into school to see all the wonderful learning and activities their children have been involved in. It was fantastic to share their work and celebrate the progress they've made. We hoped you enjoyed your time.



Red Nose Day

We celebrated Red Nose Day on Friday 20th March, with children invited to come to school dressed in red and bring a donation of £1.50.

As a school, we would like to thank everyone who took part and helped raise money for this worthy cause. Thanks to your generosity, we raised £143.45 for Comic Relief.

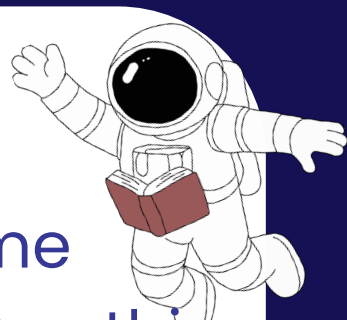


Evening Leader – Mothers day supplement

We hope all our wonderful Mums enjoyed their special messages in the Evening Leader Mother's Day supplement. We truly appreciate everything you do throughout the year, and we hope you had a Mother's Day to remember.

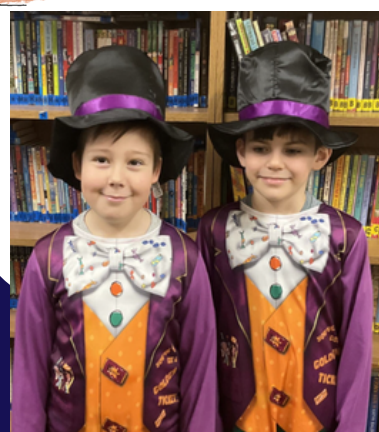
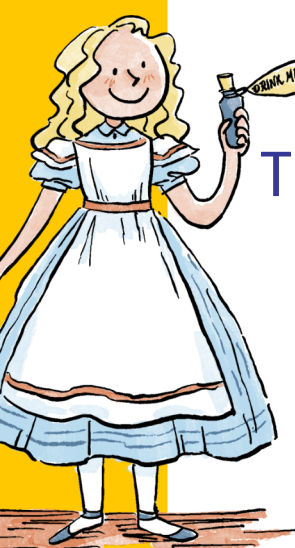


World Book Day



We had a brilliant time celebrating World Book Day this year! The children came dressed as their favourite book characters and enjoyed a range of reading-themed activities throughout the day. It was lovely to see everyone's enthusiasm for books and stories.

Thank you to parents and carers for supporting the costumes and helping make the day so special.



Eisteddfodd

We had a fantastic day celebrating St David's Day with our annual Eisteddfod! The children looked wonderful in their Welsh costumes and colours, filling the school with pride. Throughout the day, pupils showcased impressive Welsh—singing, speaking and performing confidently across the school.

We enjoyed a brilliant variety of Welsh songs and poems, and it was lovely to see such a strong Welsh ethos in every class.

Diolch yn fawr to our families for supporting the home learning tasks and helping keep Welsh culture alive at home. Your support makes days like this truly special.



LUNCH ORDERS Important Update

We kindly ask all parents and carers to ensure that school lunches are ordered on ParentPay by 8:00am each morning. Recently, we have experienced a number of children arriving at lunchtime without a meal ordered, which causes avoidable disruption and delays.

After the Easter break, the following procedure will apply:

- If you miss the 8:00am ParentPay cut-off, you may still order a lunch by sending a message to Mrs Blackmore on Class Dojo.
- All lunch orders must be received by 9:30am (Mrs Blackmore Class Dojo/call the school office).
- If no lunch order has been placed by 9:30am, parents/carers will be contacted and asked to bring a packed lunch to school for their child by 12:00pm.

We appreciate your support in helping us ensure every child has their lunch ready and that our lunchtime routines run smoothly.

! REMINDERS !

Breakfast Club - Please remember that Breakfast Club must be booked in advance via ParentPay. All sessions should be paid for prior to attending, as this helps us ensure staffing and resources are in place. We appreciate your cooperation and support in keeping the club running smoothly.

Lunch Orders - Please ensure that lunch orders are booked in advance on ParentPay so your child can choose a meal they will enjoy. Lunch choices cannot be made after 8:00am on the day. If you are unable to book a meal in time, please make sure your child brings a packed lunch before their lunchtime.

Snack Payments - Snack is not a free service and requires a contribution of £1.00 per week. Please ensure that snack payments are made promptly. If you prefer not to use the school snack service, please send your child to school with a healthy snack from home.

ROCK STEADY



Would Your Child Like to Join Rocksteady next term?

A brand-new Rocksteady term is about to begin, which means new songs, new bandmates and lots of musical fun! If your child has enjoyed hearing the music around school or has shown an interest in joining in, now is a great time for them to get involved. Rocksteady lessons take place in school time, all instruments are provided, and children get to learn in their very own band.

If you'd like your child to join, simply follow the link below to sign up:

<https://booking.rocksteadymusicschool.com/>

End of Year Trips

Foundation Phase - Year R - 2

PARK HALL FARM
Friday 5th June



Key Stage 2 - Llangollen

International
Musical Eisteddfod:
Children's Day
Wednesday 8th July



Come and See Sessions

Moel Famau : Wednesday 1st July

1 adult per child : 09:10am – 10:10am

Moel Famau : Wednesday 7th July

1 adult per child : 09:10am – 10:10am

Moel Hebog : Wednesday 1st July

1 adult per child : 13:30am – 15:00am

Moel Siabod : Thursday 2nd July

1 adult per child : 13:30am – 15:00am

Key Stage 2: Yr Wyddfa/Tryfan/Cadair Idris

Monday 29th June

2 adults per child : 14:00am – 15:00am

Wrexham Academic Year Dates 26–27

Academic year 2026/27

Term	Term open	Half term close	Half term open	Term close
Autumn 2026	Tuesday September 1	Friday October 23	Monday November 2	Friday December 18
Spring 2027	Monday January 4	Friday February 5	Monday February 15	Friday March 19
Summer 2027	Monday April 5	Friday May 28	Monday June 7	Tuesday July 20

Extra dates (summer term)

- Early May bank holiday: Monday May 3, 2027
- Common Transfer Day*: to be confirmed

Black Lane School Training Days 26–27

Tuesday 1st September 2026

Friday 23rd October 2026

Friday 18th December 2026

Monday 4th January 2027

Monday 19th July 2027

Tuesday 20th July 2027



DATES FOR THE DIARY

Event	Date	Time	Notes
Easter Holidays	Monday 30 th March – Friday 10 th April	ALL DAY	School closed for Children
Training Day	Monday 13 th April	ALL DAY	School Closed for Children
May Bank Holiday	Monday 4 th May	ALL DAY	School Closed for Children
Sports Day	Tuesday 12 th May	ALL DAY	9:15am – 10am: Nursery and Early Entitlement 10:15am – 11:15am: Reception – Year 2 13:15pm – 15:10pm: Years 3–6
Reserve Sports Day	Friday 15 th May	ALL DAY	Same schedule as original sports day
Non uniform day – Colour hamper donation	Friday 22 nd May	ALL DAY	Children can come to school dressed in the class' designated colour. A donation towards their class hamper.
May Half Term	Monday 25 th May – Friday 29 th May	All week	School Closed for Children
PTA – Non school uniform	Thursday 12 th June	ALL DAY	Donations: Bring a bottle for prixes for PTA bingo
PTA Summer Fayre	Friday 19 th June	15:00pm – 16:30pm	
Transition Days	Thursday 25 th and Friday 26 th June	ALL DAY	Children will move to their new classes. Please note that secondary school dates can be different.
Come and See session – (Yr 3–6)	Monday 29 th June	14:00pm – 15:00pm	Parents are invited to school. Limited to 2 adults per child.
Come and Play – Moel Famau	Wednesday 1 st July & Wednesday 7 th July	09:10am – 10:10am	Parents are invited to school. Limited to 1 adult per child.
Come and See session – Moel Hebog	Wednesday 1 st July	13:30pm – 15:00pm	Parents are invited to school. Limited to 1 adult per child.
Come and See session – Moel Siabod	Thursday 2 nd July	13:30pm – 15:00pm	Parents are invited to school. Limited to 1 adult per child.

Online payments

Snack, events and trip payments must be made in advance via ParentPay. School meals and Breakfast Club sessions must also be booked and paid for in advance. For help, please see Mrs Blackmore.



Attendance & Punctuality

We are following Wrexham's new Attendance Policy.

Please visit www.blacklaneschool.co.uk to view the policy in full. Where possible dental, hospital & other appointments should be made out of school hours and holiday requests will no longer be authorised unless in exceptional circumstances.

Class Dojo

Class Dojo messages may not be seen the same day by class teachers. If you need to share an urgent or important message, please contact Mrs Blackmore or call the school office. If no one is available to answer, please leave a voicemail – someone will get back to you as soon as possible.

Snack

Snacks brought from home should consist solely of a selection of fruit or vegetables. This is in line with the school's Healthy Eating Guidelines.

Reporting absences

If your child is going to be absent from school, please remember to call us at 01978 757959 and leave a message on the absence voicemail by 9:30 AM.



Free School Meals

All pupils receive a free lunch through the Universal Primary Free School Meals scheme. However, if you are eligible, we strongly encourage you to still apply. Applications help the Welsh Government direct funding to schools and may also give you access to support such as the School Essentials Grant.

To apply please follow the link:
<https://www.wrexham.gov.uk/service/school-meals/free-school-meals>

Staff Car Park

This is a polite reminder that parents and guardians are not allowed to use the staff car park. This is due to Health and Safety of everyone.



Water Bottles

We encourage all children to drink regularly throughout the day, please ensure your child has a water bottle every day.

Contact: 01978 757959

mailbox@blacklane-pri.wrexham.sch.uk