

# BLACK LANE CP SCHOOL

...Aiming high, achieving your best!

# NEWSLETTER

## FEBRUARY 2026



### Glan Llyn Residential – Years 3 & 4

Our Year 3 and 4 pupils recently enjoyed a fantastic one-night residential trip to Glan Llyn. Throughout the visit, the children took part in a wide range of exciting activities, including canoeing, wall climbing, bushcraft, and the high ropes course.

The children showed enthusiasm, resilience, and excellent teamwork in everything they did. Staff were incredibly proud of how they represented the school—each child was a real credit to us.

A wonderful time was had by all, and we're already looking forward to our next adventure!



### Interim Inspection visit

Before Christmas, Estyn visited our school to review the progress made since our last full inspection. We are pleased that the published letter recognises the strong improvements in both areas reviewed. A big thank you to all Black Lane staff for their hard work and dedication in providing the best opportunities for our children.



### Djembe drum session

Our whole school recently took part in Djembe drumming sessions, and the children absolutely loved the experience. It was a fantastic opportunity for everyone to try something new, and the enthusiasm across all year groups was wonderful to see!



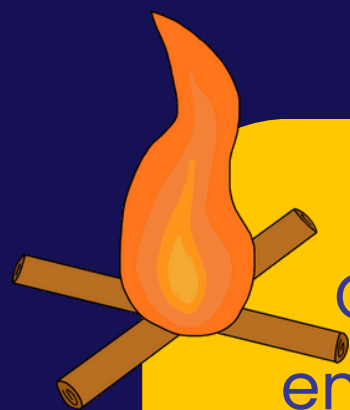
They began building a treehouse!

### Forest School Adventures

Children in Yr Wyddfa and Moel Hebog have been embracing the cold, wet, and muddy outdoors during their recent Forest School sessions.

They've loved sliding down mud slopes, learning how to build fires, and enjoying tasty snacks outside.

It's been a wonderful hands-on experience, and the children have thoroughly enjoyed every moment!



## Xplore - Our world from Space

Our KS2 pupils recently enjoyed the Our World From Space workshop, exploring Earth observation and climate science through fun, hands-on activities. Using real satellite images, children learned how scientists monitor our planet and why this work is so important.

The session linked brilliantly with our science and geography curriculum and sparked lots of curiosity and discussion. A great learning experience for everyone involved!



# Xplore!



## Outdoor Provision

We are so pleased with the wonderful progress being made in our Foundation Phase outdoor provision. The children have been thoroughly enjoying all the new equipment and learning areas, which have created exciting opportunities for exploration, creativity and active play. It's been lovely to see their confidence grow as they engage with the improved outdoor spaces.



## Years 5 and 6 Enjoy Aladdin at Ysgol Bryn Alyn

Years 5 and 6 were invited to Ysgol Bryn Alyn to watch their fantastic production of Aladdin. The pupils thoroughly enjoyed the performance, which was full of energy, colour, and brilliant acting. It was a wonderful opportunity for our learners to experience a high-quality school production and to see older pupils showcasing their talents. A huge thank you to Ysgol Bryn Alyn for inviting us – our children had a great time!

**YBA**  
Dream. Reach. Achieve.



## **! REMINDERS !**

**Breakfast Club** - Please remember that Breakfast Club must be booked in advance via ParentPay. All sessions should be paid for prior to attending, as this helps us ensure staffing and resources are in place. We appreciate your cooperation and support in keeping the club running smoothly.

**Lunch Orders** - Please ensure that lunch orders are booked in advance on ParentPay so your child can choose a meal they will enjoy. Lunch choices cannot be made after 8:00am on the day. If you are unable to book a meal in time, please make sure your child brings a packed lunch before their lunchtime.

**Snack Payments** - Snack is not a free service and requires a contribution of £1.00 per week. Please ensure that snack payments are made promptly.

If you prefer not to use the school snack service, please send your child to school with a healthy snack from home.

# Come and See/Play sessions

A parent/carer is invited to come and see what the children have been learning about so far. Please see the classes, dates and times below.

**All sessions are limited to 1 adult per child due to capacity.**

## Moel Famau

**3rd March or**

**10<sup>th</sup> March**

**9:10am-10:10am**

**Each EE/Nursery child may have one parent attend on one allocated date that you have already been invited to.**

## Moel Hebog

**12th March**

**13:30pm-**

**15:00pm**

## Moel Siabod

**11th March**

**13:30pm-**

**15:00pm**

## Cadair Idris

**23rd March**

**14:00pm-**

**15:00pm**

## Tryfan

**23rd March**

**14:00pm-**

**15:00pm**

## Yr Wyddfa

**23rd March**

**14:00pm-**

**15:00pm**

# DATES FOR THE DIARY

| Event  | Date  | Time                 | Notes   |
|--|---|----------------------|---|
| <b>Half Term</b>   | Monday 16 <sup>th</sup> -<br>20th February                        | 5 days               | School Closed for Children  |
| <b>Come and Play session<br/>(Nursery and EE)</b>            | Tuesday 3rd<br>March  | 09:10AM -<br>10:10AM | Half of nursery and EE parents are invited to stay and play with their child. Limited to 1 adult per child. |
| <b>Non-School Uniform<br/>day</b>                            | Wednesday 4th<br>March  | ALL DAY              | Children are asked to bring in an Easter themed donation for the PTA Easter Bingo.                          |
| <b>Eistedfodd</b>  | Friday 6th<br>March   | ALL DAY              | Children to come dressed in Welsh costumes or Welsh Colours   |
| <b>World Book Day</b>  | Monday 9 <sup>th</sup><br>March                                   | ALL DAY              | Children can come dressed as a favourite book character and share their favourite book.                     |
| <b>Come and Play session<br/>(Nursery and EE)</b>            | Tuesday 10th<br>March   | 09:10AM -<br>10:10AM | Half of nursery and EE parents are invited to stay and play with their child. Limited to 1 adult per child. |
| <b>Cardiff Residential<br/>Trip - Yr5&amp;6</b>              | Wednesday 11 <sup>th</sup> -<br>Friday 13 <sup>th</sup> March     | 2 night<br>stay      | Payment plan in place, Families on low incomes may be able to claim remission for cost.                     |
| <b>Come and See session<br/>- Moel Siabod (Yr 1 &amp; 2)</b> | Wednesday 11th<br>March   | 13:30pm -<br>15:00pm | Parents are invited to school. Limited to 1 adult per child.  |
| <b>Come and See session<br/>- Moel Hebog (Yr 1 &amp; R)</b>  | Thursday 12th<br>March  | 13:30pm -<br>15:00pm | Parents are invited to school. Limited to 1 adult per child.  |
| <b>Parents Evening(s)</b>                                    | 17 <sup>th</sup> , 18 <sup>th</sup> and<br>19 <sup>th</sup> March | 15:15pm -<br>17:00pm | Parents can book a slot using an online booking system. This will be released close to the time             |
| <b>Red Nose Day</b>  | Friday 20 <sup>th</sup><br>March                                  | ALL DAY              | Children can come to school dressed in red. A cash or Parentpay donation of £1.00 for Comic Relief.         |
| <b>Come and See session<br/>- (Yr 3-6)</b>                   | Monday 23rd<br>March  | 14:00pm -<br>15:00pm | Parents are invited to school. Limited to 1 adult per child.  |
| <b>PTA Easter Bingo</b>                                      | Thursday 26th<br>March  | 17:00pm -<br>20:00pm | The PTA will be hosting their annual Easter Bingo. Doors open at 17:00 Eyes down 18:00                      |
| <b>Easter Holidays</b>                                       | Monday 30 <sup>th</sup> March -<br>Friday 10 <sup>th</sup> April  | ALL DAY              | School closed for Children  |
| <b>Training Day</b>  | Monday 13th<br>April  | ALL DAY              | School Closed for Children  |

### Online payments

Snack, events and trip payments must be made in advance via ParentPay. School meals and Breakfast Club sessions must also be booked and paid for in advance. For help, please see Mrs Blackmore.



### Attendance & Punctuality

We are following Wrexham's new Attendance Policy.

Please visit [www.blacklaneschool.co.uk](http://www.blacklaneschool.co.uk) to view the policy in full. Where possible dental, hospital & other appointments should be made out of school hours and holiday requests will no longer be authorised unless in exceptional circumstances.



### Class Dojo

Class Dojo messages may not be seen the same day by class teachers. If you need to share an urgent or important message, please contact Mrs Blackmore or call the school office. If no one is available to answer, please leave a voicemail – someone will get back to you as soon as possible.

### Snack

Snacks brought from home should consist solely of a selection of fruit or vegetables. This is in line with the school's Healthy Eating Guidelines.

### Reporting absences

If your child is going to be absent from school, please remember to call us at 01978 757959 and leave a message on the absence voicemail by 9:30 AM.



### Free School Meals

All pupils receive a free lunch through the Universal Primary Free School Meals scheme. However, if you are eligible, we strongly encourage you to still apply. Applications help the Welsh Government direct funding to schools and may also give you access to support such as the School Essentials Grant.

To apply please follow the link:  
<https://www.wrexham.gov.uk/service/school-meals/free-school-meals>

### Staff Car Park

This is a polite reminder that parents and guardians are not allowed to use the staff car park. This is due to Health and Safety of everyone.



### Water Bottles

We encourage all children to drink regularly throughout the day, please ensure your child has a water bottle every day.

**Contact: 01978 757959**

[mailbox@blacklane-pri.wrexham.sch.uk](mailto:mailbox@blacklane-pri.wrexham.sch.uk)