

Black Lane CP School
Pentre Broughton

...Aiming high, achieving the best



PREPARING FOR YEAR 1 AND 2

“Parents are a child’s first educator”

WHAT IS THE FOUNDATION PHASE?

The Foundation Phase is a developmental curriculum for three to seven year olds in Wales. It encourages children to be creative, imaginative and to have fun while making learning more effective.

Your child will be given opportunities to explore the world around them and understand how things work by taking part in practical activities relevant to their developmental stage.

They will be challenged through practical activities and develop their thinking with open-ended questions. Your child will be encouraged to explore concepts and share ideas for solving problems.

The curriculum is planned to be appropriate to the child's stage of learning. Children should only move on to the next stages of their learning when they are developmentally ready and at their own pace.



7 AREAS OF LEARNING

Language, Literacy and Communication

Mathematical Development

Personal and Social Development

Physical Development

Welsh Language Development

Knowledge and Understanding of the World

Creative Development



ASSESSMENTS

- A Baseline assessment is carried out within the first 6 weeks of Reception using the Foundation Phase Profile.
- There are 4 core area of learning that are assessed:
 - Language, Literacy and Communication (LLC)
 - Mathematical development (MD)
 - Personal and Social Development (PSD)
 - Physical Development (PD)
- Assessments are made using the Baseline Assessment Scales: Bronze, Silver, Gold, Outcomes 1 – 6. The expected outcome at the *end* of Year 1 is **outcome 4**, which means that they need to be achieving some of **outcome 5**! The expected outcome at the end of year 2 is outcome 5, which again means that they need to be achieving some of outcome 6.
- Pupils in year 2 are assessed at the end of Foundation Phase and take part in National Tests: Reading, Procedural Maths and Reasoning Maths.
- Children will develop and acquire skills at different rates and progress through the same developmental continuum.
- However there is a need to be aware of where child development is above or below the expected outcome – this could indicate that a child may require extra support or may be more able and talented.



EXPECTATIONS YEAR 1 AND 2

We want to best for you and your child.

We'd like your children to have a head start.

Here are 3 key skills for each core area for you to help with during Summer.



LANGUAGE, LITERACY & COMMUNICATION

- To know the 100 keywords: reading and spelling
- To identify phonics e.g. sounds of letters and groups of letters such as th/sh/ch; ou/ow; ai/ay
- To write simple sentences; using capital letters and lower case letters – extending to a sequence of sentences using capital letters and full stops.



MATHEMATICAL DEVELOPMENT

- Recite numbers up to 100 (and beyond) – forward and backward, starting at different points.
- Understand place value: tens and units.
- Add and subtract numbers up to 10/20/50/100



PERSONAL AND SOCIAL DEVELOPMENT

- To show perseverance and concentration e.g. problem solving activities, board games, colouring.
- To understand different viewpoints and beliefs.
- To develop friendships.



PHYSICAL DEVELOPMENT

- To sustain activity over a period of time.
- Ride a 2 wheeled bike without stabilizers.
- To cut out difficult shapes and handwriting skills.



HANDOUT



- Oxford Reading Tree
- 100 key words
- Phonics sheet
- 'Reading with your child' leaflet



READING

- Daily practise
- Expectations – parent and teacher comments
- Skills – phonics, blending, spellings, key word building
- Oxford Reading Tree age guide

Ages 4-11

Year Group	Ages 4-5		Ages 5-6				Ages 6-7		
Book Band	Pink	Red	Yellow	Blue	Green	Orange	Turquoise	Purple	
ORT Stage	1	1+	2	3	4	5	6	7	8



PREPARING FOR RECEPTION

'PARENTS ARE A CHILD'S FIRST EDUCATOR'



Literacy

- Talk about people and places with your child
- Read with your child and share books
- Visit the library to choose books
- Make up nonsense rhymes
- Play 'What am I?' – riddles
- Play word games such as scrabble, boggle, word searches
- Keyword magnet and flashcards
- Encourage them to write for a purpose - cards, invitations, shopping lists, diary, stories
- Colouring books

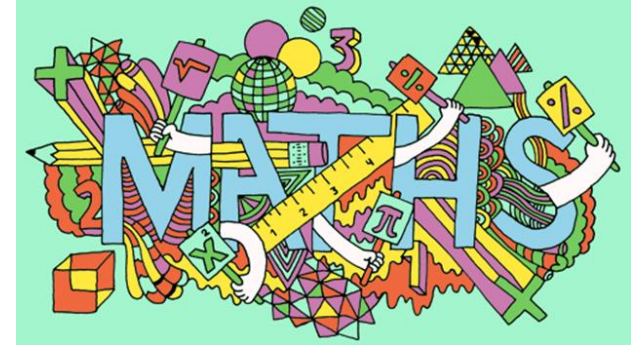


PREPARING FOR RECEPTION

'PARENTS ARE A CHILD'S FIRST EDUCATOR'

Numeracy

- Use Hwb for maths games e.g. J2Blast
- Abacus Active Learn
- Count objects around you, grouping in 2s, 5s and 10s
- Ordering numbers to 100
- Playing simple board games – counting forward and backwards
- Use everyday objects to add and take away
- Using real money – count groups of coins
- Pay amounts and give change from 10p/20p/£1.00



PREPARING FOR RECEPTION

'PARENTS ARE A CHILD'S FIRST EDUCATOR'



Personal Skills

- Perseverance: not giving up and overcoming difficulties
- Taking turns
- Waiting for needs to be met
- Manners
- Good understanding of healthy living e.g. healthy eating, drinking, exercise and sleep.
- Understanding and accepting others e.g. similarities and differences.



USEFUL WEBSITES

- How is my child doing in Foundation Phase? A guide for parents and carers

<http://gov.wales/docs/dcells/publications/150702-hwst-foundation-en.pdf>

- Foundation Phase Framework (revised 2015) – skills expected at each year

<http://gov.wales/docs/dcells/publications/150803-fp-framework-en.pdf>

- Foundation Phase Profile Handbook – details of skills ladders

<http://gov.wales/docs/dcells/publications/151008-fp-profile-en.pdf>

- My Local School – provides school performance data for parents

<http://mylocalschool.wales.gov.uk/school.htm?estab=6652187&lang=eng>



THANK YOU FOR YOUR TIME



If you have any questions, we will be happy to answer them.

